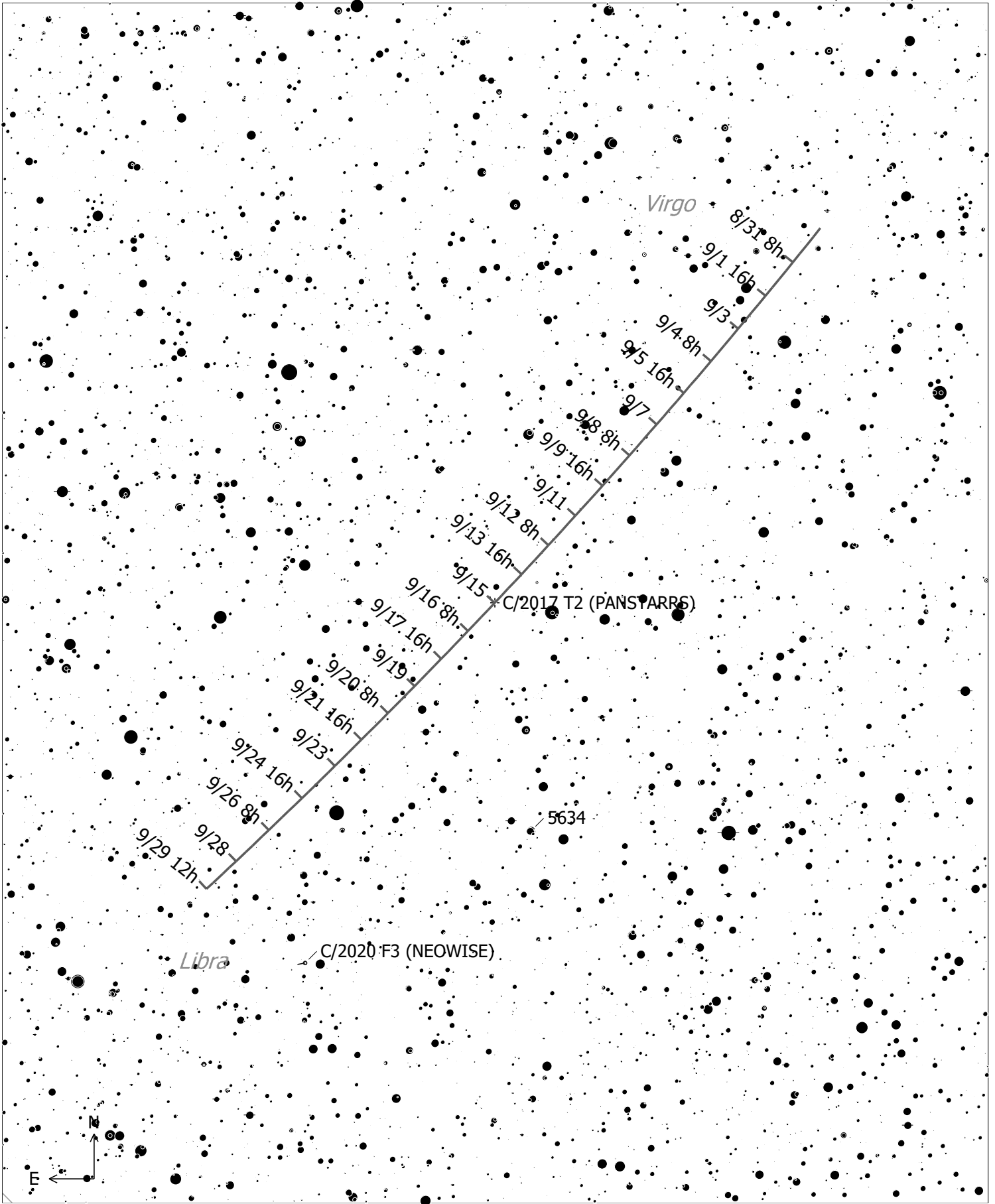


C/2017 T2 (PANSTARRS) (Comet)
 Magnitude: 12.48 Coma Diameter: 1.4' SBR: 21.9 Mag/arcsec² Earth Distance: 3.0 AU

◇	Dark Neb.	-	Mult. Star	8	●	1
●	Globule	☄	Comet		●	2
○	Open Cl.	○	Galaxy		●	3
●	Globular Cl.	○	Galaxy Gr.		●	4
		●	Quasar		●	5
		●	Planetary		●	6
		□	H II Region		●	7
		□	SN Remnant			
		□	Ref. Neb.			



C/2017 T2 (PANSTARRS) (Comet)

Magnitude: 12.48 Coma Diameter: 1.4' SBr: 21.9

Mag/arcsec² Earth Distance: 3.0 AU

• ◊ Globule	● ⊙ Planetary	- Mult. Star	• 8 ● 4
◊ ◊ Open Cl.	□ ⊠ HII Region	☄ Comet	• 9 ● 5
● ⊙ Globular Cl.	□ ⊠ SN Remnant	○ ⊙ Galaxy	• 10 ● 6
	□ ⊠ Ref. Neb.	○ ⊙ Galaxy Gr.	• 11 ● 7
	◇ ◊ Dark Neb.	● ✦ Quasar	