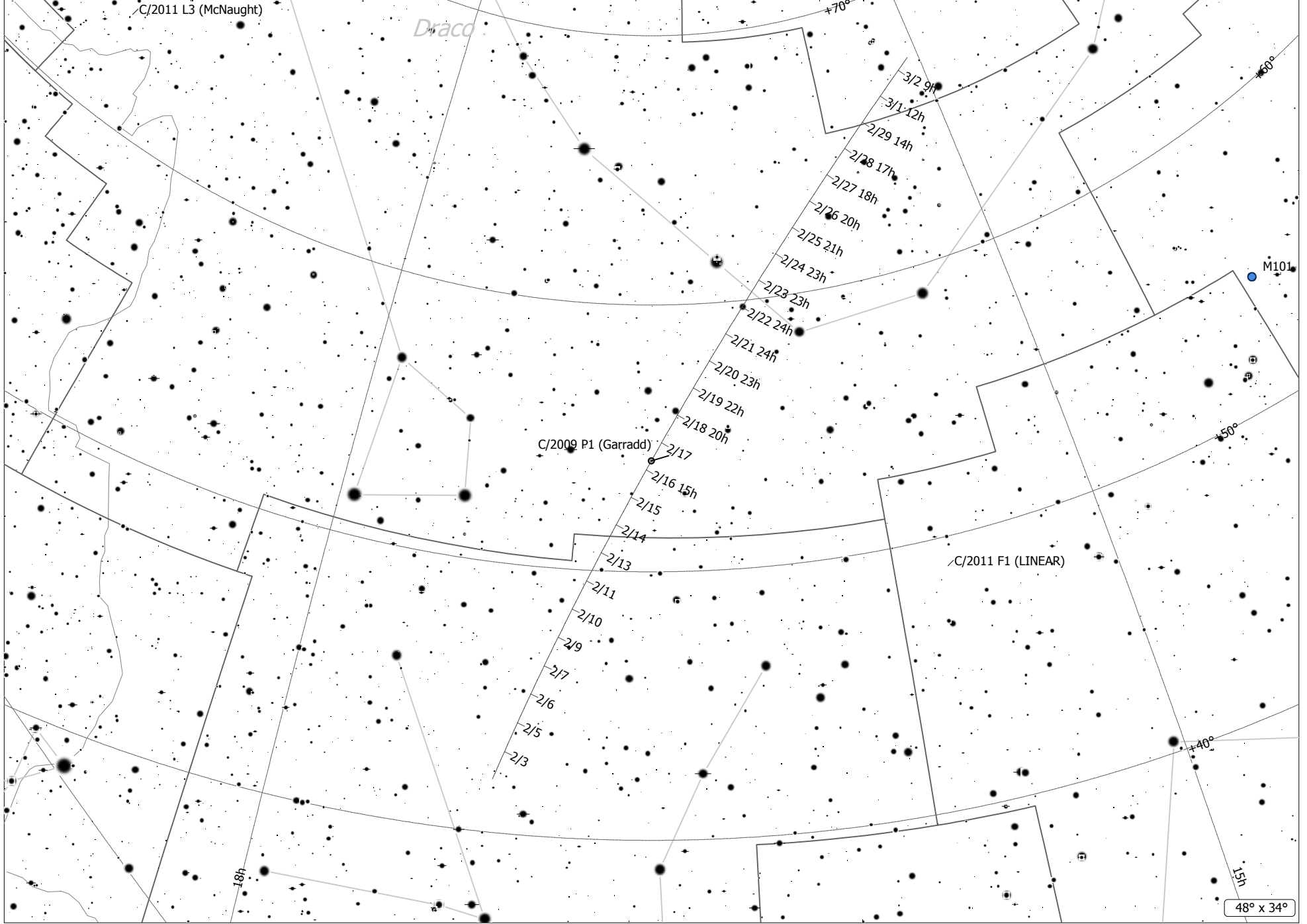


C/2009 P1 (Garradd)



C/2009 P1 (Garradd) (Comet)  
 Magnitude: 6.22 Coma Diameter: 14.0' SBR: 20.6 Mag/arcsec<sup>2</sup> Earth Distance: 1.4 AU

<ul style="list-style-type: none"> <li>• Mult. Star</li> <li>☉ Comet</li> <li>♁ Galaxy</li> </ul>	<ul style="list-style-type: none"> <li>8</li> <li>7</li> <li>6</li> <li>5</li> <li>4</li> <li>3</li> <li>2</li> <li>1</li> </ul>
---	--